

# **Busting the Affordability Barrier: What You Need to Know About This Year's Florida FAFSA Challenge**

December 12<sup>th</sup>, 2018



# Welcome!



**Amy Bolick, MA**

Statewide Programs Coordinator

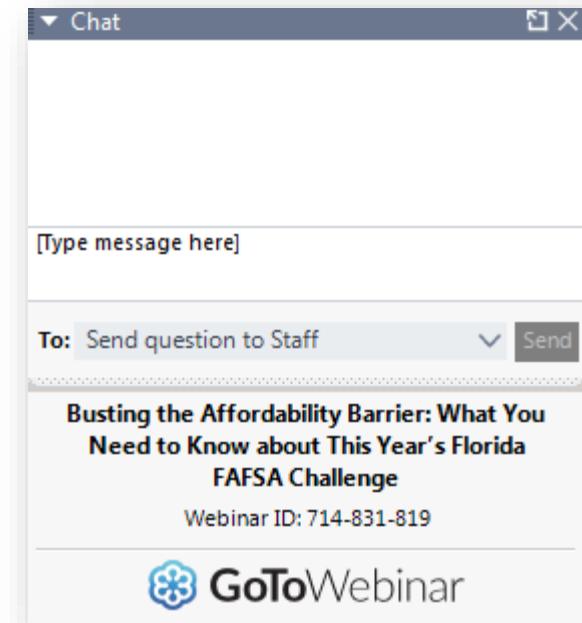
Florida College Access Network

@abolick\_FCAN

abolick@floridacollegeaccess.org

# Questions & Conversation

- Submit your questions in the chat box
- Share on social media
  - @FLCollegeAccess
  - #CollegeReadyFlorida
  - #FAFSAFL



*This webinar is being recorded; all materials will be available within a week of recording*

# Today's Presenters



**Kimberly Lent, MPH**

Senior Research Associate

Florida College Access Network

[klent@floridacollegeaccess.org](mailto:klent@floridacollegeaccess.org)

# Today's Presenters



## **Ralph Aiello, M.Ed, Ed.S**

Director, School Counseling &  
BRACE (Broward Advisors for  
Continuing Education)

Broward County Public Schools

[ralph.aiello@browardschools.com](mailto:ralph.aiello@browardschools.com)

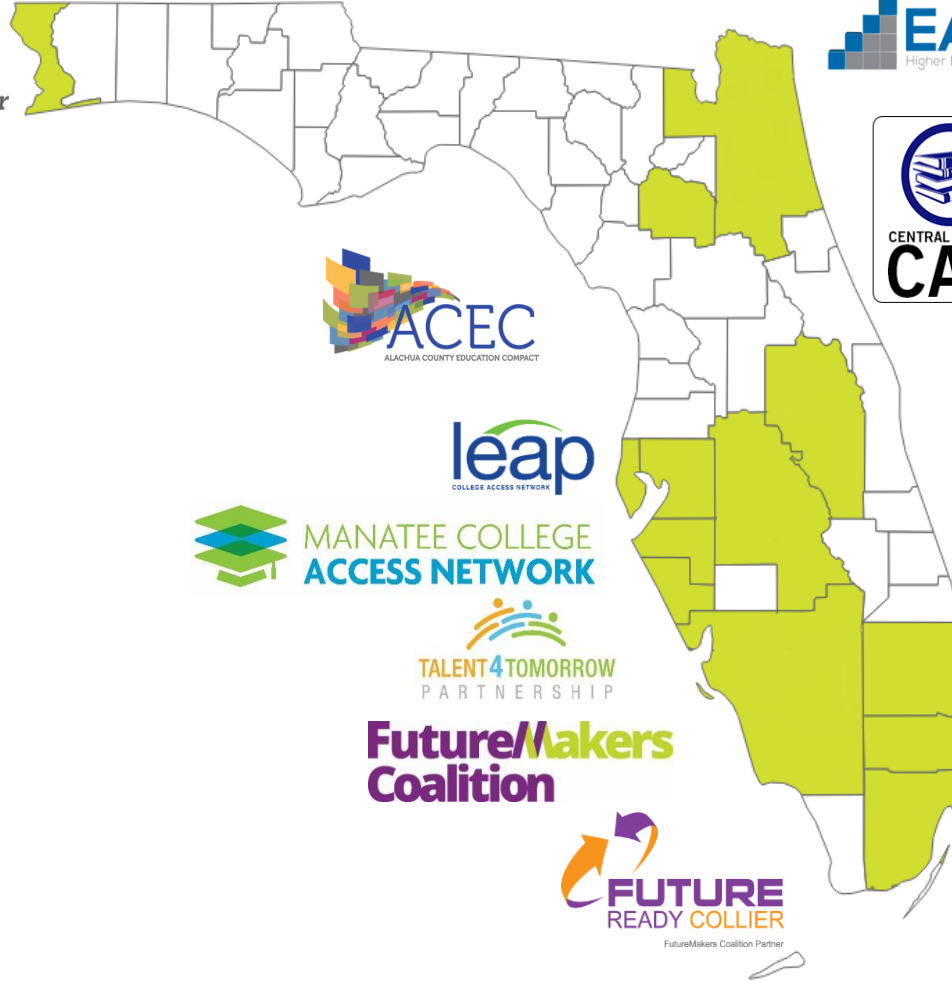
# Florida College Access Network

**Our mission:** To create and strengthen a statewide network that catalyzes and supports communities to improve college and career readiness, access, and completion for all students

**Our vision:** At least 60% of working-age Floridians will hold a high-quality postsecondary degree or credential by the year 2025

# Local College Access Networks in Florida

**A**chieve  
Escambia  
Cradle to Career



**EARN UP**  
Higher Earning through Higher Learning

**CENTRAL FLORIDA  
CAN**

**ACEC**  
ALACHUA COUNTY EDUCATION COMPACT

**leap**  
COLLEGE ACCESS NETWORK

**MANATEE COLLEGE  
ACCESS NETWORK**

**TALENT 4 TOMORROW  
PARTNERSHIP**

**FutureMakers  
Coalition**

**FUTURE  
READY COLLIER**  
FutureMakers Coalition Partner

**COLLEGE IS  
4 EVERYONE**  
C4E

**Achieve**  
Palm Beach County

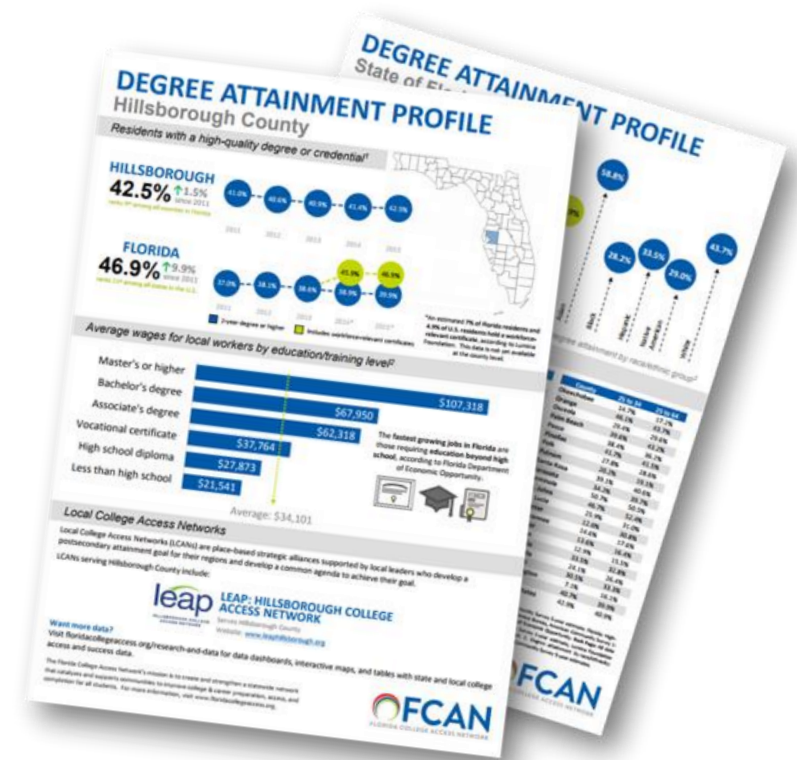
**BRIDGE TO LIFE**  
BROWARD COLLEGE/CAREER ACCESS NETWORK



**FLORIDA**  
COLLEGE ACCESS NETWORK

# FCAN's Research, Data, & Policy Work

- Produce student-centered research & policy analysis
- Clearinghouse for college and career readiness, access and completion data
- Develop local, state and national partnerships and policy alignment around degree attainment



# College Ready Florida



**FLORIDA  
FAF\$A  
CHALLENGE**

**FLORIDA  
COLLEGE  
DECISION  
DAY**

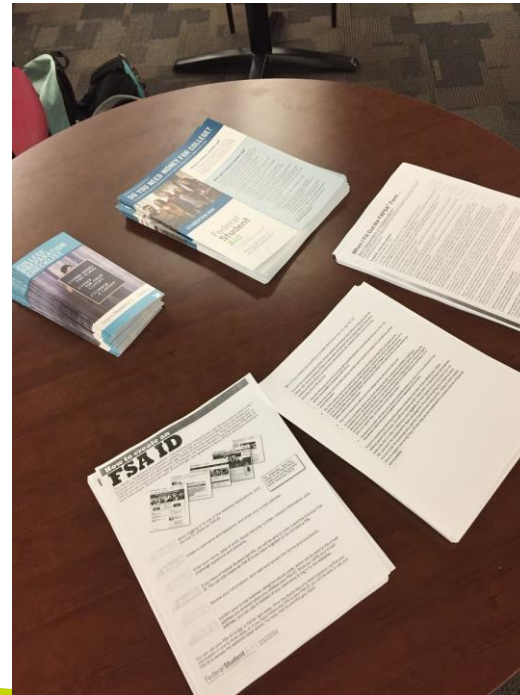
# FAFSA Challenge Overview

- 290 schools registered in 37 counties
- Began on October 1, ends on March 31
- Challenge: Increase FAFSA Completion 5% over previous year
- Winner's Categories:
  - MVP
  - Most Improved
  - \*New\* 50/50 Club
  - FAFSA Champions



# Hosting FAFSA Events

- Schools, LCANs, and community partners can host FAFSA completion events
- FAFSA completion and college application completion efforts can be combined



# FAFSA Submissions vs Completion

- Parent/student **signatures missing** from FAFSA or web application
- Dependent students: **Social Security Number, Date of Birth, or Last Name** missing for one or both parents
- Missing **marital status** and/or number of family members (**household size**)

# FAFSA Verification

- Schools across the country are reporting that students are being flagged for verification at **abnormally high rates**
- Students flagged for verification will need to submit **proof of income** to **every school** they want a financial aid report from
- FAFSAs flagged for verification will be listed as **"Completed"** in student level data
- An asterisk\* next to the **Expected Family Contribution (EFC) on the Student Aid Report (SAR)** indicates verification.
  - A "C" next to this number indicates the student has been flagged for citizenship

# FAFSA Verification

- Students will have to complete a **verification worksheet** with each school
- Students/parents will need to request a copy of their **tax return transcript**
- Students or parents who did not file will need a **Verification of Non-Filing Letter**
- Students and parents can use the **Disaster Designation** “Florida, Hurricane Irma” to waive fees for requesting transcripts
- Students should have the IRS **send documents directly to them**, rather than sending them to the schools

# OSFA Resources

- Data Sharing Agreement
- Speakers Bureau
- Online financial aid overview video
- Train-the-Trainer
- FAFSA Lab training
- Visit [www.NavigatingYourFuture.org](http://www.NavigatingYourFuture.org) or contact Jan Smith at [jan.smith@fldoe.org](mailto:jan.smith@fldoe.org) for more information

# FCAN Resources

- FAFSA Completion Toolkit
  - Outreach/promotion strategies
  - FAFSA resources from around the web
- FAFSA First Look Data Dashboard
- FAFSA Florida Challenge Data Dashboard

<http://www.floridacollegeaccess.org/about-the-florida-fafsa-challenge/>

# What's Different this FAFSA Season?

- US DOE data includes students up to age 19
  - Thank you FCAN partners!!
- 2<sup>nd</sup> year of October start
  - True week-to-week comparison data
- Hurricanes Irma and Maria

FAFSA IN OCTOBER?



 **NASFAA**  
NATIONAL ASSOCIATION OF STUDENT FINANCIAL AID ADMINISTRATORS

**FLORIDA**  
COLLEGE ACCESS NETWORK

# FCAN's Florida FAFSA Challenge Dashboard

- Feature data from US DOE (FAFSA completions) and FL DOE (12<sup>th</sup> grade enrollment)
- Free interactive resource
  - Track completions
  - Evaluate progress vs. last year's data
  - Identify trends
  - PDF printout
- Downloadable data!



# Dashboard Features

**Filter by county**



By School | School Detail

### Florida FAFSA Finish Line: Completion Rates for 12th Graders at Florida Public Schools

Did you know Florida's high school graduates leave behind over \$100 million each year in Pell Grants? Did you know that FAFSA completion is a strong indicator of college attendance? Filling out the FAFSA is an essential step in preparing for life after high school and finding out how much money you can get to pay for college or career school.

View FAFSA completion data for over 600 public schools in Florida by navigating the search tools and filters below.

School Name: (All) | School City: (All) | County: Alachua

Level: (All) | Charter Status: (All)

12th Graders: 2016-17: 20 (194713) | Low-income % (2016-17): 28.1% (61.5%)

**FAFSA Completion Rate: 2017**

School Name	County	Grade	Completion Rate
P.K. Yonge Developmental Research Sc..	Alachua	12	58.9%
Eastside High School	Alachua	3	49.3%
Hawthorne Middle/High School	Alachua		45.2%
Professional Academy Magnet At Lofte..	Alachua		42.9%
Gainesville High School	Alachua	4	41.3%
F. W. Buchholz High School	Alachua	9	39.3%
Santa Fe High School	Alachua	3	7.8%
DISTRICT TOTAL	Alachua	2	8.8%
Newberry High School	Alachua	1	
Sidney Lanier Center	Alachua		
Statech Gainesville	Alachua		
Alachua Mycroschool Of Integrated Aca..	Alachua	1	

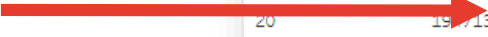
FAFSA Completion Rate: 2016-17: 0.0%

100.0%

Click to view data by county

# Dashboard Features

**Filter by low-income rate**



By School | School Detail

### Florida FAFSA Finish Line: Completion Rates for 12th Graders at Florida Public Schools

Did you know Florida's high school graduates leave behind over \$100 million each year in Pell Grants? Did you know that FAFSA completion is a strong indicator of college attendance? Filling out the FAFSA is an essential step in preparing for life after high school and finding out how much money you can get to pay for college or career school.

View FAFSA completion data for over 600 public schools in Florida by navigating the search tools and filters below.

School Name: (All) | School City: (All) | County: (All) | [Click to view data by county](#)

Level: (All) | Charter Status: (All) | School Type: (All)

12th Graders: 2016-17 | Low-income % (2016-17) | Change (4/1/16 to 3/31/17)

20 | 15 | 13 | 0.0% | 100.0% | -17.9% | 52.6%

**FAFSA Completion Rates through March 31, 2017**

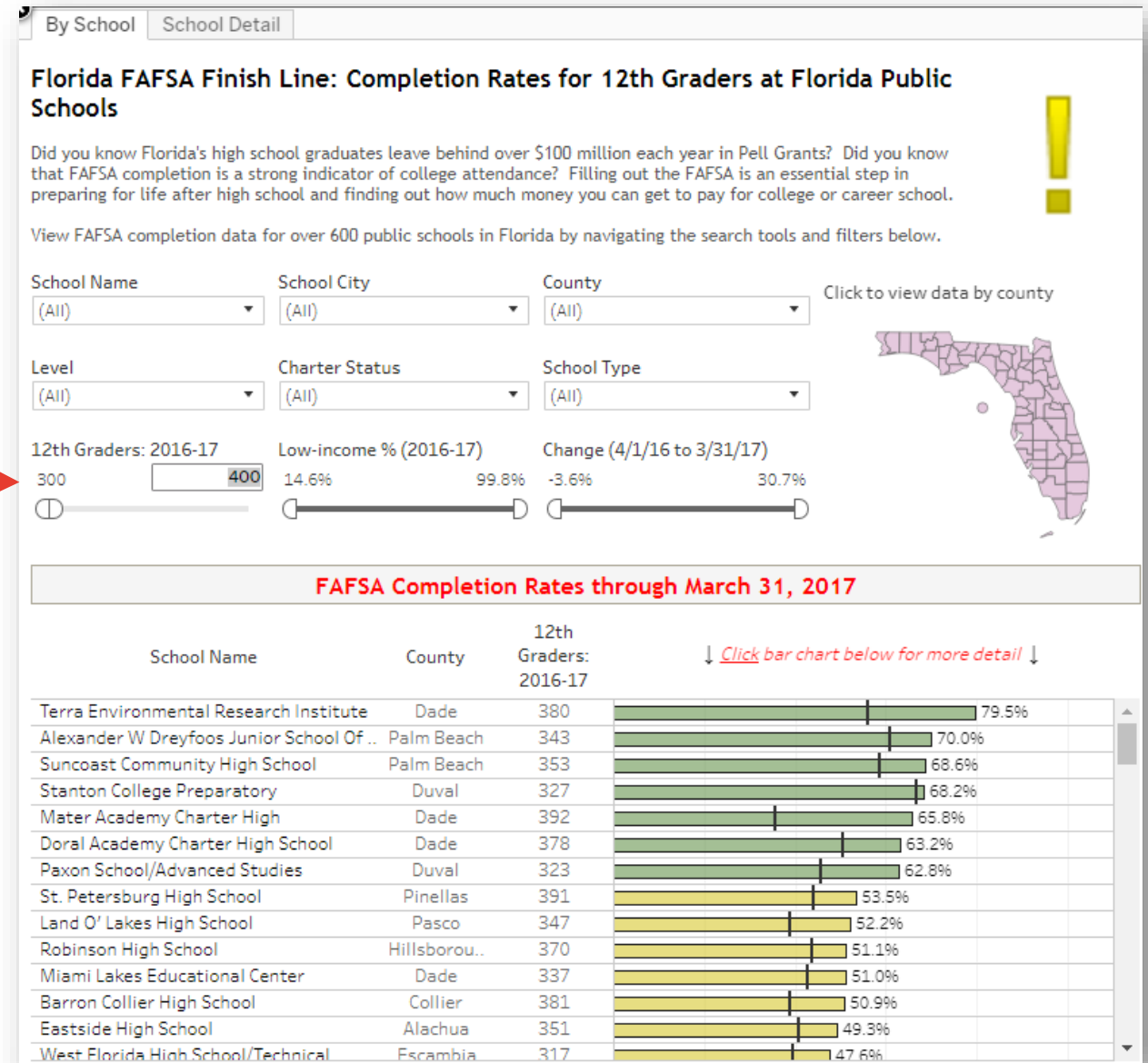
School Name	County	12th Graders: 2016-17	Completion Rate
Archimedean Upper Conservatory	Dade	52	96.2%
School For Advanced Studies North	Dade	56	89.3%
Jose Marti MAST 6-12 Academy	Dade	45	82.2%
Terra Environmental Research Institute	Dade	380	79.5%
College Academy At Broward College	Broward	283	78.8%
Somerset Arts Conservatory	Broward	42	78.6%
School For Advanced Studies - South	Dade	111	76.6%
I Preparatory Academy	Dade	38	76.3%
Pine View School	Sarasota	217	76.0%
Mast Academy	Dade	216	73.6%
Young Womens Preparatory Academy	Dade	33	72.7%
Orlando Science Middle High Charter	Orange	47	72.3%
New World School Of The Arts	Dade	115	71.3%
Doral Performing Arts & Entertainment	Dade	94	70.2%

FAFSA Completion Rate: 2016-17

0.0% | 100.0%

# Dashboard Features

**Filter by  
number of  
12<sup>th</sup> graders**




# A Look at Last Year's FAFSA Cycle

- Florida FAFSA Challenge (October – March)
  - 34.1% FAFSA completion rate vs. 25.0% in 2015-16
  - \$37 million more in Pell Grants!
- We've made great progress, but there's still work to do
  - 34<sup>th</sup> among all states in FAFSA completion
  - Florida had 3<sup>rd</sup> highest year-to-year increase in FAFSA completion
  - Florida is 4<sup>th</sup> highest in Pell-Grant eligible students

# Early FAFSA Results

- Increase in 12<sup>th</sup> graders
- Using preliminary enrollment data
  - Florida's FAFSA completion is approximately 23.4%
  - Difference between submitted vs. completed FAFSAs: 5,763 applications
- Compared to this time last year
  - Almost 300 high schools are ahead in FAFSA Completion
  - 57% of districts are ahead in FAFSA Completion

First Look: 2017-18 FAFSA Completion Data for 12th Graders at Florida Public Schools



School Name County City Charter Status

(All) (All) (All) (All)

School Name	City	County	18-19 Cycle: FAFSAs Completed thru 11/24/17	17-18 Cycle: FAFSAs Completed thru 11/24/16
Coral Reef Senior High Scho...	Miami	Dade	365	300
Cypress Bay High School	Weston	Broward	357	368
Timber Creek High	Orlando	Orange	338	239
West Orange High	Winter Garden	Orange	313	291
Coral Gables Senior High Sc..	Coral Gables	Dade	301	336
Hialeah Gardens Senior Hig..	Hialeah Gardens	Dade	293	253
G. Holmes Braddock Senior ..	Miami	Dade	264	237
Terra Environmental Resear..	Miami	Dade	261	255
John A. Ferguson Senior Hig..	Miami	Dade	238	313
Winter Park High	Winter Park	Orange	226	243
Coral Springs High School	Coral Springs	Broward	226	187
Dr. Michael M. Krop Senior ..	Miami	Dade	225	228
Apopka High	Apopka	Orange	222	194
Boca Raton Community Hig..	Boca Raton	Palm Bea..	218	260
John I. Leonard High School	Greenacres	Palm Bea..	217	175
Jupiter High School	Jupiter	Palm Bea..	215	202
Bartram Trail High School	Saint Johns	St. Johns	211	180
Mater Academy Charter High	Hialeah Gardens	Dade	209	164
Cypress Creek High	Orlando	Orange	208	225
Dr. Phillips High	Orlando	Orange	207	252

Source: U.S. Department of Education's Central Processing System. School characteristics (ex. county) added by Florida College Access Network; includes public school data only. For data definitions, details, and frequently asked questions, visit the Office of Federal Student Aid's FAFSA Completion Tool: <https://studentaid.ed.gov/sa/about/data-center/student/application-volume/afsa-completion-high-school>

DOWNLOAD ALL DATA



School Counseling & BRACE Advisement Department

# FAFSA Challenge

December 12, 2017



# School Counseling Department

- Ralph.Aiello Director
  - Carol.Lopez Postsecondary
  - Danny.Tritto Secondary
  - Daniel.Shapiro Elementary
  - Reina.Murray ESOL
  - Adna.Joseph Clerical Support
- [www.browardschools.com/brace](http://www.browardschools.com/brace)
  - 754-321-1675
  - Twitter: Counselor\_BRACE
  - Email: FirstName.LastName@browardschools.com



# US Department of Education

**Federal Student Aid**  
An OFFICE of the U.S. DEPARTMENT of EDUCATION

PROUD SPONSOR of  
the AMERICAN MIND®

## Free Application for Federal Student Aid (FAFSA) Submissions by High School Applications processed through October 31 of the first year of each cycle

Name	City	State	2017/ 2018 Cycle		2016/ 2017 Cycle					
			Through October 31, 2017		Through October 31, 2016		Through June 2016		Through December 2016	
			Applications Submitted	Applications Complete	Applications Submitted	Applications Complete	Applications Submitted	Applications Complete	Applications Submitted	Applications Complete
3DLEARN INTERACTIVE ACADEMY	BONITA SPRINGS	FL	11	10	7	7	<5	<5	7	7
A. CRAWFORD MOSLEY HIGH SCHOOL	LYNN HAVEN	FL	249	235	196	188	157	147	200	190
A. PHILIP RANDOLPH ACADEMIES	JACKSONVILLE	FL	39	31	50	40	24	20	52	42
A.D. HENDERSON UNIVERSITY SCHOOL & FAU HIGH SCHOOL	BOCA RATON	FL	60	59	57	53	54	51	60	57
ABEKA ACADEMY	PENSACOLA	FL	433	405	400	384	305	293	430	409



# FCAN First Look Dashboard

## First Look: 2017-18 FAFSA Completion Data for 12th Graders at Florida Public Schools



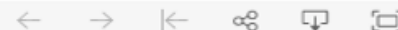
School Name: (All) | County: (All) | City: (All) | Charter Status: (All)

School Name	City	County	18-19 Cycle: FAFSAs Completed thru 11/24/17	17-18 Cycle: FAFSAs Completed thru 11/24/16
Coral Reef Senior High Scho..	Miami	Dade	365	300
Cypress Bay High School	Weston	Broward	357	368
Timber Creek High	Orlando	Orange	338	239
West Orange High	Winter Garden	Orange	313	291
Coral Gables Senior High Sc..	Coral Gables	Dade	301	336
Hialeah Gardens Senior Hig..	Hialeah Gardens	Dade	293	253
G. Holmes Braddock Senior ..	Miami	Dade	264	237
Terra Environmental Resear..	Miami	Dade	261	255
John A. Ferguson Senior Hig..	Miami	Dade	238	313
Winter Park High	Winter Park	Orange	226	243
Coral Springs High School	Coral Springs	Broward	226	187
Dr. Michael M. Krop Senior ..	Miami	Dade	225	228
Apopka High	Apopka	Orange	222	194
Boca Raton Community Hig..	Boca Raton	Palm Bea..	218	260
John I. Leonard High School	Greenacres	Palm Bea..	217	175
Jupiter High School	Jupiter	Palm Bea..	215	202
Bartram Trail High School	Saint Johns	St. Johns	211	180
Mater Academy Charter High	Hialeah Gardens	Dade	209	164
Cypress Creek High	Orlando	Orange	208	225
Dr. Phillips High	Orlando	Orange	207	252

Source: U.S. Department of Education's Central Processing System. School characteristics (ex. county) added by Florida College Access Network, includes public school data only. For data definitions, details, and frequently asked questions, visit the Office of Federal Student Aid's FAFSA Completion Tool: <https://studentaid.ed.gov/sa/about/data-center/student/application-volume/fafsa-completion-high-school>

**DOWNLOAD  
ALL DATA**

+ a b l e a u



# OSFA Database

Welcome to

**Florida Student Scholarship  
& Grant Programs**

1-888-827-2004

Florida Department of Education  
Office of Student Financial Assistance

State Programs Home

Applications and Updates

Financial Aid Resources

Postsecondary Institutions

High Schools

State Program Links

## HIGH SCHOOLS

**View High Schools that are eligible to submit transcripts for Florida Financial Aid programs:**

- [Public Schools](#)
- [Private Schools](#)
- [Not on the list?](#)

**High School Counselors:**

**HIGH SCHOOL STAFF,  
LOGIN HERE FOR:**

- District Certifications
- Florida Financial Aid Applicants from your School
- High School Contacts and User Information
- Publications & Communications



# Naviance Task – Houston ISD

Overview Goals To-do List **Tasks Assigned to Me**

 my tasks show:

 = required  = required for graduation

tracking tasks

Overdue tasks:

-  [File the FAFSA](#), due date: Feb 15, 2017 Assigned by Your Counselor
-  [Complete College Now Senior Survey](#), due date: May 31, 2017 Assigned by Your Counselor
-  [Add/update e-mail address to Profile](#), due date: Oct 31, 2017 Assigned by Your Counselor



# BCPS Recalculations

- Uses current/final class size
- Subtract students
  - Transfers
  - Undocumented
  - Special Diploma\*
  - Opt-Outs
  - Employment
  - Military
- 10% Ineligible Assumption
- Avg. Pell = \$3,611



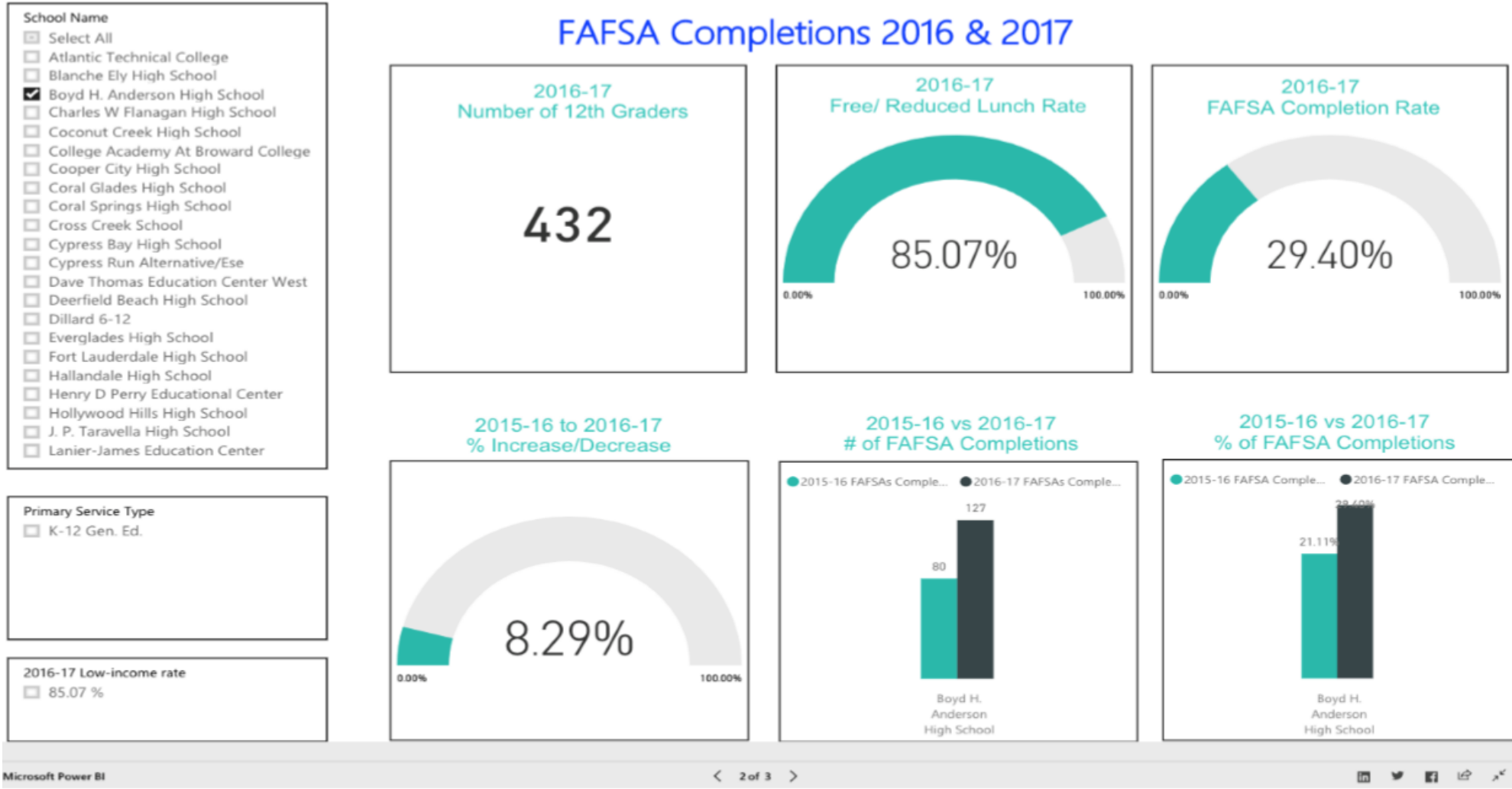
# Pell Grant Value Calculation

	# Standard Diploma Recipients	90% of Grads	District Data	x FAFSA Eligible Grads	Eligible Pell & FAFSA x \$3,611				/ FAFSA Eligible Graduates	& FAFSA x Completion Rate	& FAFSA - Pell Completers	Pell Completers x \$3,611	Missed Pell x \$3,611
Name	Final Graduates	FAFSA Eligible Graduates	FRL Rate	Eligible Pell & FAFSA	Total Pell Possible	Submitted Applications	Completed Applications	Incomplete Applications	Completion Rates	Pell Completers	Missed Pell	Pell \$	Missed Pell \$
	612	551	78%	430	\$ 1,551,372	415	367	48	67%	286	143	\$ 1,033,685	\$ 517,687
	550	495	70%	347	\$ 1,251,212	363	324	39	65%	227	120	\$ 818,975	\$ 432,237
	681	613	56%	343	\$ 1,239,382	434	400	34	65%	224	119	\$ 808,864	\$ 430,518
	375	338	88%	297	\$ 1,072,467	233	204	29	60%	180	117	\$ 648,247	\$ 424,220
	600	540	64%	346	\$ 1,247,962	435	380	55	70%	243	102	\$ 878,195	\$ 369,766
	413	372	74%	275	\$ 993,234	262	236	26	63%	175	100	\$ 630,625	\$ 362,609
	349	314	92%	289	\$ 1,043,478	243	211	32	67%	194	95	\$ 700,967	\$ 342,511
	672	605	60%	363	\$ 1,310,360	493	449	44	74%	269	93	\$ 972,803	\$ 337,556
	351	316	77%	243	\$ 878,350	232	197	35	62%	152	92	\$ 547,753	\$ 330,598
	502	452	65%	294	\$ 1,060,442	352	315	37	70%	205	89	\$ 739,352	\$ 321,090
	674	607	44%	267	\$ 963,790	441	410	31	68%	180	87	\$ 651,424	\$ 312,366
	429	386	72%	278	\$ 1,003,829	316	272	44	70%	196	82	\$ 707,178	\$ 296,651
	508	457	55%	251	\$ 908,022	349	312	37	68%	172	80	\$ 619,648	\$ 288,374
	486	437	72%	315	\$ 1,137,205	374	328	46	75%	236	79	\$ 852,774	\$ 284,431
	501	451	58%	262	\$ 944,356	347	319	28	71%	185	77	\$ 668,107	\$ 276,249
	303	273	85%	232	\$ 837,012	214	185	29	68%	157	75	\$ 567,830	\$ 269,182
	336	302	86%	260	\$ 939,091	250	217	33	72%	187	73	\$ 673,885	\$ 265,206
	432	389	68%	264	\$ 954,691	325	283	42	73%	192	72	\$ 694,901	\$ 259,790
	236	212	82%	174	\$ 628,921	161	140	21	66%	115	59	\$ 414,543	\$ 214,378
	270	243	87%	211	\$ 763,402	198	176	22	72%	153	58	\$ 552,916	\$ 210,485
	502	452	54%	244	\$ 880,983	376	346	30	77%	187	57	\$ 674,679	\$ 206,304
	738	664	24%	159	\$ 575,622	484	455	29	69%	109	50	\$ 394,321	\$ 181,301
	436	392	57%	224	\$ 807,665	337	313	24	80%	178	45	\$ 644,239	\$ 163,427
	1074	967	22%	213	\$ 767,886	819	762	57	79%	168	45	\$ 605,348	\$ 162,538
	602	542	29%	157	\$ 567,368	428	393	35	73%	114	43	\$ 411,546	\$ 155,822
	485	437	31%	135	\$ 488,622	336	312	24	71%	97	39	\$ 349,256	\$ 139,367
	263	237	46%	109	\$ 393,173	212	200	12	84%	92	17	\$ 332,212	\$ 60,961
	134	121	56%	68	\$ 243,872	107	97	10	80%	54	13	\$ 196,150	\$ 47,723
	76	68	24%	16	\$ 59,278	36	35	1	51%	8	8	\$ 30,332	\$ 28,946
	282	255	24%	87	\$ 312,705	220	225	1	67%	80	7	\$ 288,510	\$ 21,195





# BCPS BI Dashboards



# BCPS BI Dashboards

School Name

- Atlantic Technical College
- Blanche Ely High School
- Boyd H. Anderson High School
- Charles W Flanagan High School
- Coconut Creek High School
- College Academy At Broward College
- Cooper City High School
- Coral Glades High School
- Coral Springs High School
- Cross Creek School
- Cypress Bay High School
- Cypress Run Alternative/Ese
- Dave Thomas Education Center West
- Deerfield Beach High School
- Everglades High School
- Fort Lauderdale High School
- Hallandale High School
- Henry D Perry Educational Center
- Hollywood Hills High School
- J. P. Taravella High School
- Lanier-James Education Center
- Lauderhill 6-12
- Marjory Stoneman Douglas High School
- Mcarthur High School
- Miramar High School
- Monarch High School
- Northeast High School
- Nova High School
- Piper High School
- Plantation High School
- Seagull School
- Sheridan Technical College
- South Broward High School
- South Plantation High School
- Stranahan High School

**50.72%**

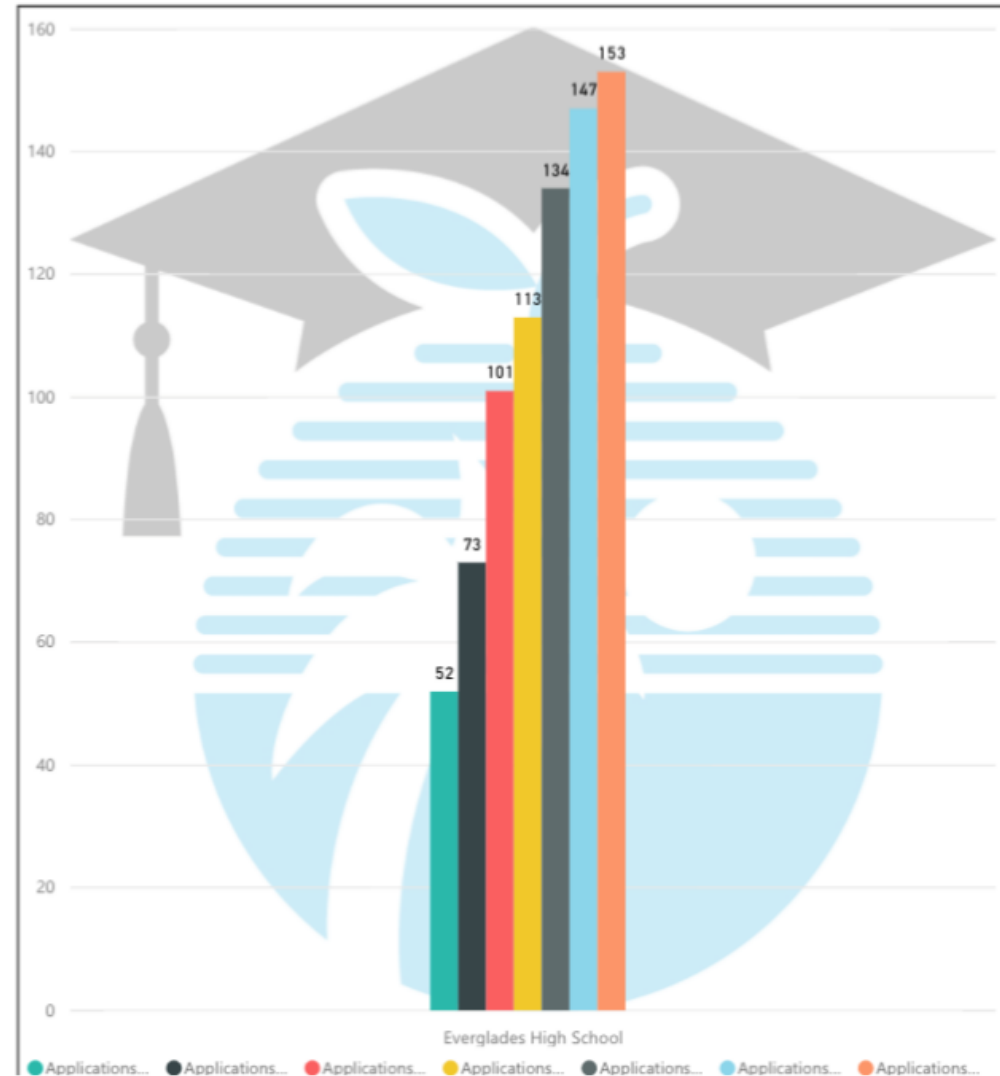
Min of Low-Income Rate (2016-17)

**552**

12th Graders (2016-17)

**153**

ApplicationsCompleteNov17 2017



# Application Drives

## BCPS

- College Fairs
- School Events
- Title 4 Grant (11)



## Partners

- College Summit
- TRIO
- AVID
- Community Orgs



## Broward College

- Jumpstart
- Open Office Hours
- Completion Events



# Free Resources

Want to browse our Financial Aid Toolkit resources rather than searching for something specific? [View all financial aid tools and resources.](#)

I AM LOOKING FOR

Resource Type ▼

- All
- Article or Email Content
- Glossaries
- Handouts
- How-To Guides
- Infographics
- Presentations
- Public Service Announcements
- Social Media Content

TO HELP

Audience Type ▼

LEARN ABOUT

Topic ▼

**GET RESOURCES** >

or [Clear Selection](#)

FOIA | [Privacy Policy](#) and Viewers | [usa.gov](#) | [ed.gov](#) | [whitehouse.gov](#) | [Contact Us](#)



# Trained FAFSA Advisors

- Professional Development
  - Broward College
  - University of Miami
  - FLDOE
  - uAspire
- College Partners
  - Lynn University
  - NSU
  - FAU
  - FIU
- Title 4 Grant
  - 32 School Counselors
  - 32 BRACE Advisors
  - Community Partners
- Volunteer Grant
  - 30+ Volunteers
  - Advisors
  - Marketing Calls
- Bridge 2 Life
  - LCAN Volunteers



# Communications

## Digital Media

- Twitter
- Facebook
- Website
- SharePoint

Name	Modified	Modified By
Affordability Intake Form	December 6, 2016	Danny Tritto
AI_Review & Collection Planning Doc	December 6, 2016	Danny Tritto
Annotated Federal Shopping Sheet	December 6, 2016	Danny Tritto
Award Letter Analyzer 2017 - TTA - Editable	April 28	Buffie R. Phillips
Award Letter Analyzer 2017 - TTA	December 6, 2016	Danny Tritto
Award Letter Analyzer 2017 - TTA	December 6, 2016	Danny Tritto
Award Letter Analyzer 2017 -Alice	April 28	Buffie R. Phillips
BCPS FAFSA Completion and Award Letter Review	December 6, 2016	Danny Tritto
College Affordability Planning_ H1P Cohort2016	December 6, 2016	Danny Tritto
Covering_the_Bill_H1P_Webinar_Follow-Up	April 17	Carol M. Lopez Rios
CSS PROFILE Checklist	December 6, 2016	Danny Tritto
FAFSA Case Studies 2016-2017 Annotated Answer Key	December 6, 2016	Danny Tritto

## Parent Link

- Phone
- Text
- E-mail

**FAFSA**  
Federal Student Aid

Need money for college?  
The FAFSA is FREE to complete.

The Free Application for Federal Student Aid (FAFSA) is where students get the majority of their grants, loans and work study funding to go to most colleges, universities, and technical schools.

In 2010-2017, BCPS students received over \$15,000,000 in total Grants from completing the FAFSA. 50% over 45% of seniors submit their FAFSA and left at least another \$5,000 in grants on the table.

Many sources of funding are on a first-come, first-served basis, so apply as soon as possible.

Everybody is strongly encouraged to submit a FAFSA, regardless of their income. You may pick and choose which types and the amount of financial aid you receive. So, it doesn't hurt to file for a financial aid package!

**"Where to Get Help"**  
School Counselors and BRACD Advisors are available to assist families with the application process, as well as families who do not have a valid social security number and may require alternative forms of financial aid.

In partnership with Stroud College, anybody may visit the Financial Aid Office at all of their campuses to receive one-on-one assistance with the FAFSA, even if you don't plan to go to BC! Click here to find the times and locations at each campus for FAFSA assistance:  
<http://www.stroud.edu/financialaid/faq/ContactUs.htm>

Stroud College FREE HELP with FAFSA, OPEN! Later:  
• February 8th at JC Central  
• February 22nd at BC South

COLLEGE PLANNING

**NAVIANCE**  
FAMILY CONNECTION

DOWNLOAD FREE MOBILE APP

Stay Connected with Your Child's Education

- Academic Performance
- Account Balances
- Bus Pick-Up and Drop-Off Times

## Personal Contact!

MESSAGES CLASSES ACCOUNTS REPORTS HELP Account Settings

Outbox Groups Message Tracking

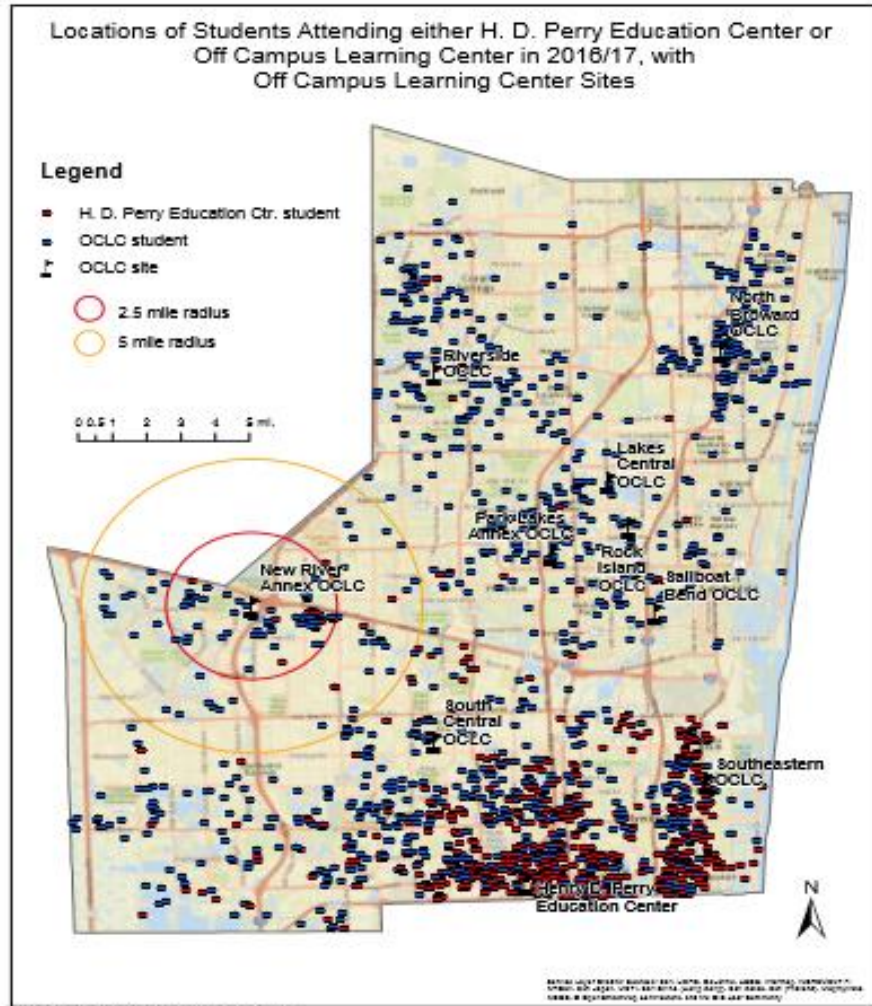
subject...  
recipients Choose...  
search for recipients  
Time Now  
Messages  
Advanced Options

Template  
Type text...

Mobile navigation icons: Home, Phone, Messages, App Store, Play Store



# FAFSA Road Show



# Broward County Public Schools

600 SE 3<sup>rd</sup> Ave

Fort Lauderdale, FL 33301

<http://www.browardschools.com>

## Office of Academics

Student Support Initiatives Division

School Counseling & BRACE Advisement Department

FAFSA Challenge – FCAN Presentation, December 12, 2017

---

### The School Board of Broward County, FL

Nora Rupert, Chair

Heather P. Brinkworth, Vice Chair

Robin Bartleman

Abby M. Freedman

Patricia Good

Donna P. Korn

Laurie Rich Levinson

Ann Murray

Dr. Rosalind Osgood

**Robert W. Runcie, Superintendent of Schools**

The School Board of Broward County, Florida, prohibits any policy or procedure which results in discrimination on the basis of age, color, disability, gender identity, gender expression, national origin, marital status, race, religion, sex or sexual orientation. Individuals who wish to file a discrimination and/or harassment complaint may call the Director, Equal Educational Opportunities/ADA Compliance Department at 754-321-2150 or Teletype Machine (TTY) 754-321-2158.



# Save the Date!

## 2018 Florida College Access Network Summit

May 10<sup>th</sup> – 11<sup>th</sup>

Hyatt Regency Orlando

*Featuring sessions on college access, affordability, success and completion*

*Registration opens in January 2018!*



# There's Still Time - Register for the Challenge!

## Who Can Register?

- Schools or districts
- Postsecondary institutions
- LCANs
- Community Organizations

## Why Register?

- Get the latest updates
- Help us track our progress and connect participants with resources

<http://www.floridacollegeaccess.org/take-actionpartner-initiatives/>

# Questions?



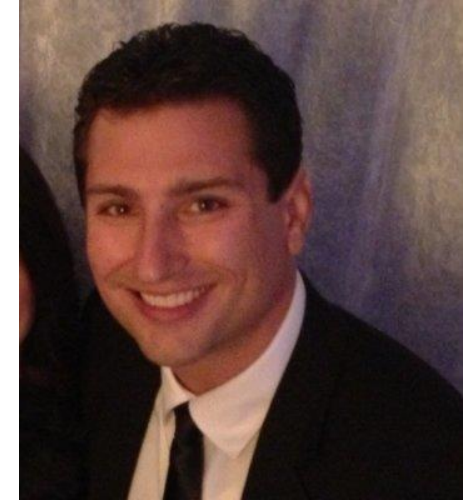
**Amy Bolick, MA**

Statewide Programs Coordinator  
Florida College Access Network  
@abolick\_FCAN  
abolick@floridacollegeaccess.org



**Kimberly Lent, MPH**

Senior Research Associate  
Florida College Access Network  
klent@floridacollegeaccess.org



**Ralph Aiello, M.Ed, Ed.S**

Director, School Counseling & BRACE  
(Broward Advisors for Continuing  
Education)  
Broward County Public Schools  
ralph.aiello@browardschools.com